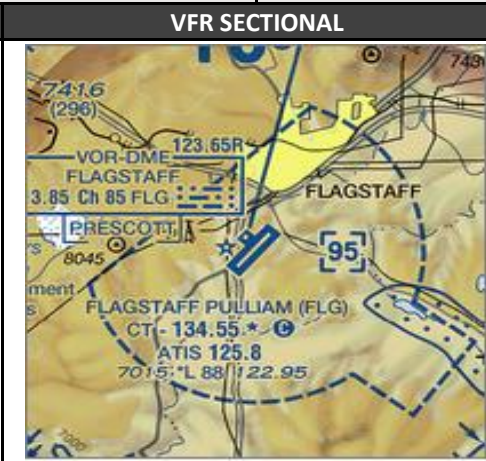
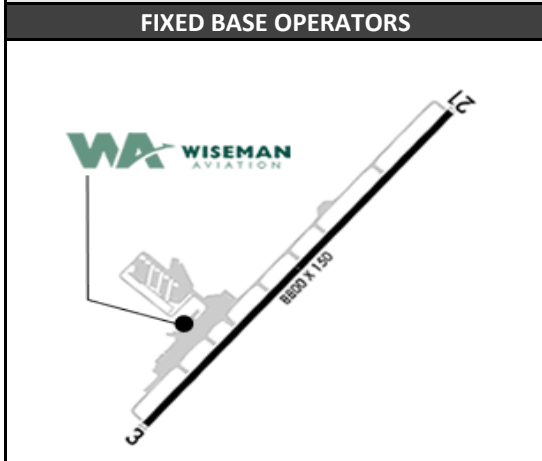




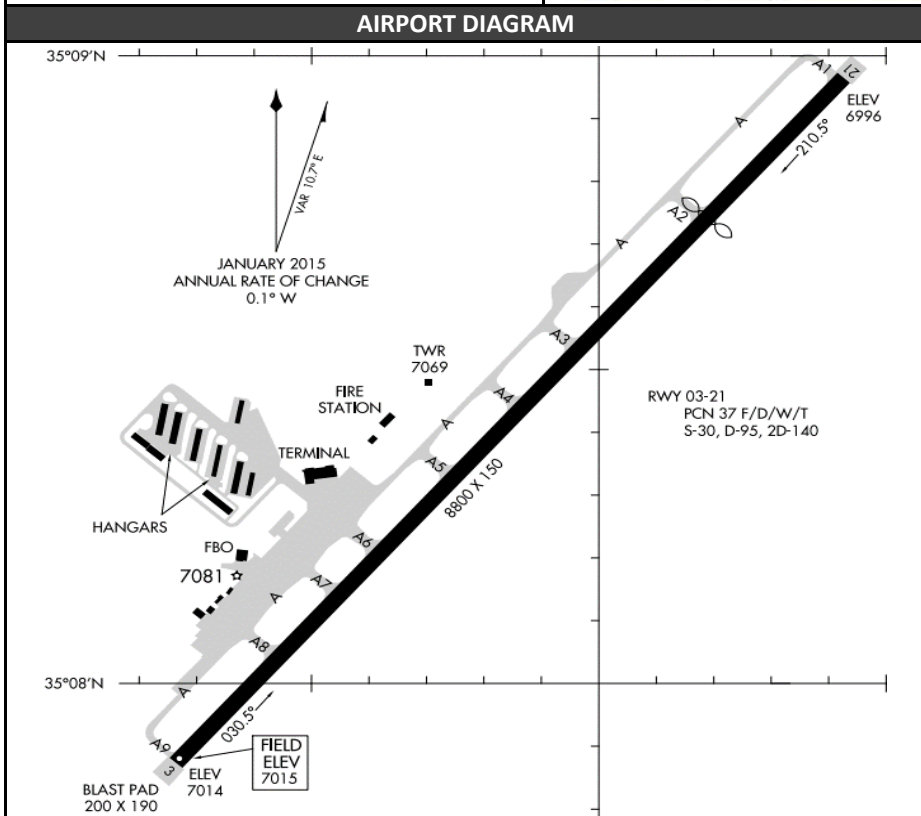
# FLAGSTAFF PULLIAM AIRPORT (FLAGSTAFF, AZ) KFLG

Radio Frequencies		Runway Information (*Denotes Calm Wind Runway)						Airport Information	
Radio	Freq	Runway	Heading	Length	Pattern	TPA PROP	TPA JET	Hours	Alt
ATIS	125.800							*0600-2100	
FLG_GND	121.900	3	031	8800	Right	7500/8000	8500	Elevation	7014
FLG_TWR	134.550	*21	211	8800	Left	7500/8000	8500	Class D	9500
PHX_K_APP	126.370							Initial Alt	12000

INSTRUMENT APPROACH PROCEDURES						STANDARD INSTRUMENT DEPARTURES			
RWY	APP	FREQ	OBS	I/F/AF	APP ALT	FLAGSTAFF ONE (ODP)			
3	GPS	45718	31	SEZCY	9600				
21	ILS/LOC	110.50	214	FIMAL	10200				
21	GPS	99341	214	FIMAL	10200				
21	VOR	113.85	236	SHEFF	9000				



NEARBY NAVAIDS		
VORTAC		
FLAGSTAFF	FLG	113.85



**IFR RELEASES**

**ONE IN ONE OUT RULE:**  
 P50 will either approve or not approve the control towers to use visual separation between IFR operations. Even if visual separation is approved, IFR releases are still mandatory. All releases will have a 3 minute void time.

**EXAMPLE RELEASE:**  
 FLG\_TWR: "Request release N123"  
 PHX\_APP: "N123 released"  
 PHX\_APP can amend a Standard Release, i.e. "N123 released, maintain 9000"

**HOW THIS WORKS:**

1. During IFR clearance, give standard altitude to maintain, or Climb via SID, whichever is appropriate for that specific aircraft at your airport
2. During taxi or when holding short of departure runway, request release
3. When released by PHX\_APP click the 3:00 Minute timer in VRC. Depart the aircraft ASAP. If you're unable to clear the aircraft for takeoff within this time, request release again from PHX\_APP

**AIRPORT SPECIFIC PROCEDURES**

**Runway 21 Standard Release:**  
**ALL DEPARTURES**  
 "Fly runway heading, maintain 12000"

**Runway 3 Standard Release:**  
**ALL DEPARTURES**  
 "Turn right heading 090, maintain 12000"