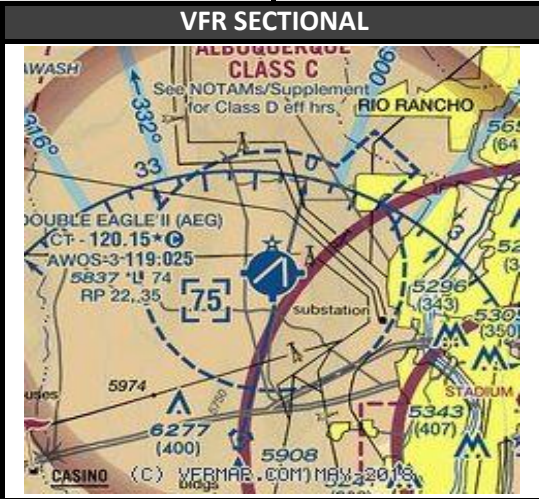
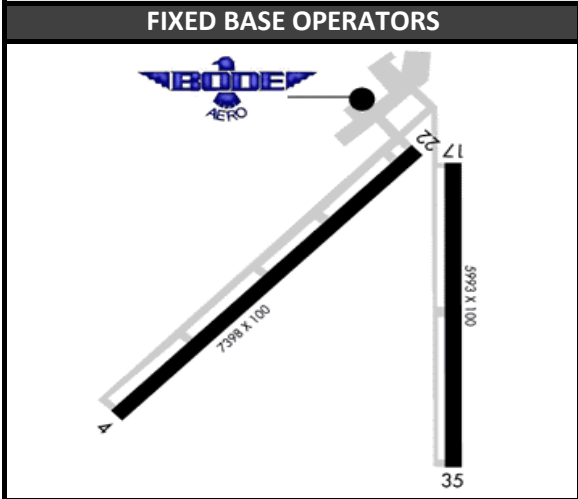


# DOUBLE EAGLE II AIRPORT (ALBUQUERQUE, NM) KAEG

Radio Frequencies			Runway Information (*Denotes Calm Wind Runway)					Airport Information		
ATIS	118.000		<b>Runway</b>	<b>Heading</b>	<b>Length</b>	<b>Pattern</b>	<b>TPA PROP</b>	<b>TPA JET</b>	Hours	1300-0100Z
AEG_GND	121.625	AEG_G	*4	035	7398	Left	6900	7400	Elevation	5837
AEG_TWR	120.150	AEG_T	22	215	7398	Right	6900	7400	Class D	7500
ABQ_N_APP	127.400	ABQ_N	17	169	5993	Left	6900	7400	<b>Initial Alt</b>	<b>7000/10000</b>
			35	349	5993	Right	6900	7400		

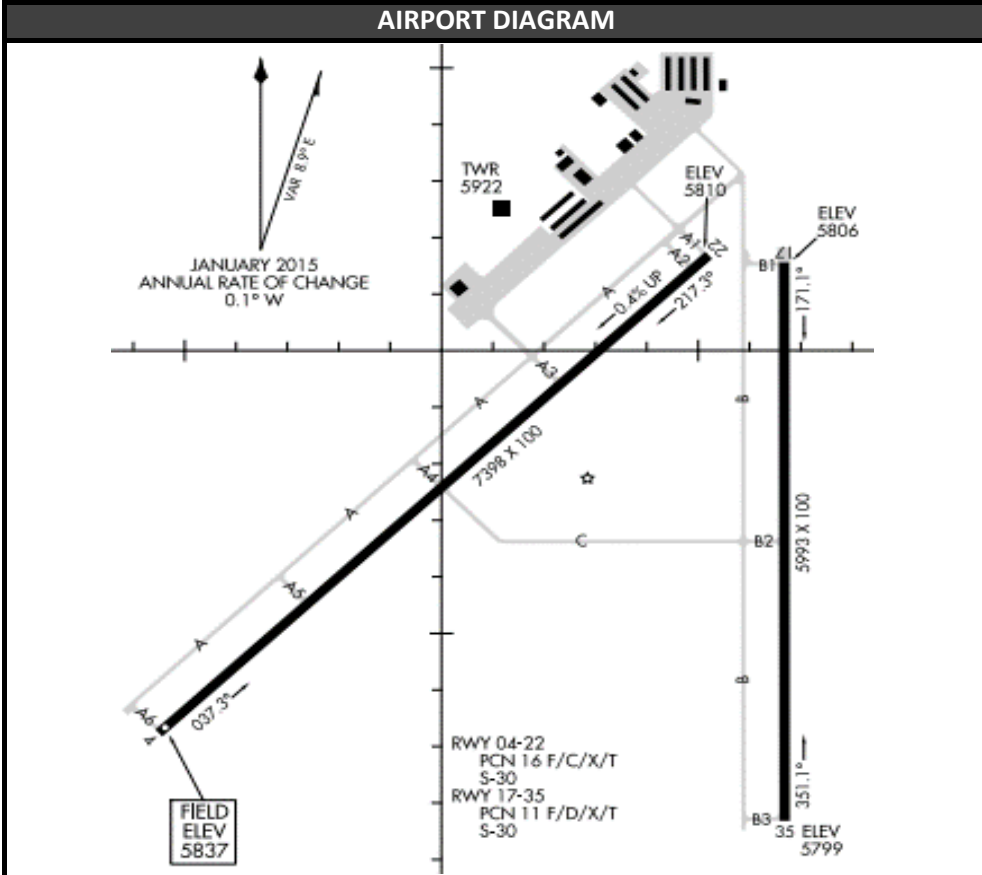
INSTRUMENT APPROACH PROCEDURES					
RWY	APP	FREQ	OBS	I/F/AF	APP ALT
4	<a href="#">GPS</a>		035	YECUG	8800
22	<a href="#">ILS/LOC</a>	110.10	215	AE	7700
22	<a href="#">GPS</a>		215	EYIPE	8600

STANDARD INSTRUMENT DEPARTURES		



**NEARBY NAVAIDS**

VORTAC		
ALBUQUERQUE	ABQ	113.20
NDB		
DUDLE	AE	351



**IFR RELEASES**

**ONE IN ONE OUT RULE:**  
 ABQ Approach will either approve or not approve the control towers to use visual separation between IFR operations. Even if visual separation is approved, IFR releases are still mandatory. All releases will have a 3 minute void time

**EXAMPLE RELEASE:**  
 AEG\_TWR: "Request release N123"  
 ABQ\_APP: "N123 released"  
 ABQ\_APP can amend a Standard Release, i.e. "N123 released maintain 9000"

**HOW THIS WORKS:**

1. During IFR clearance, give standard altitude to maintain, or Climb via SID, whichever is appropriate for that specific aircraft at your airport
2. During taxi or when holding short of departure runway, request release
3. When released by ABQ\_APP click the 3:00 Minute timer in VRC. Depart the aircraft ASAP. If you're unable to clear the aircraft for takeoff within this time, request release again from ABQ\_APP

**AIRPORT SPECIFIC PROCEDURES**

All Runways Standard Release:

**ALL DEPARTURES**  
**"Fly runway heading, maintain 7000/10000"**