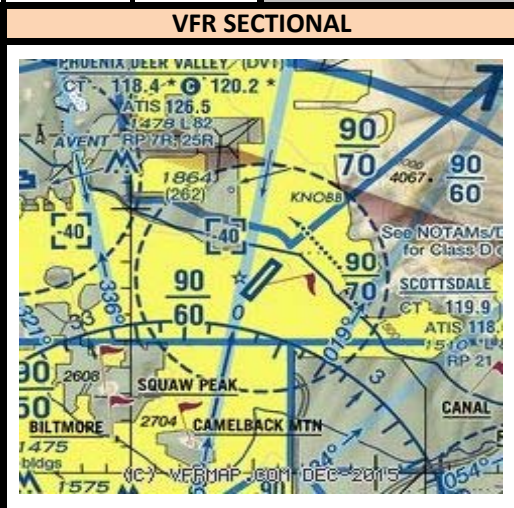
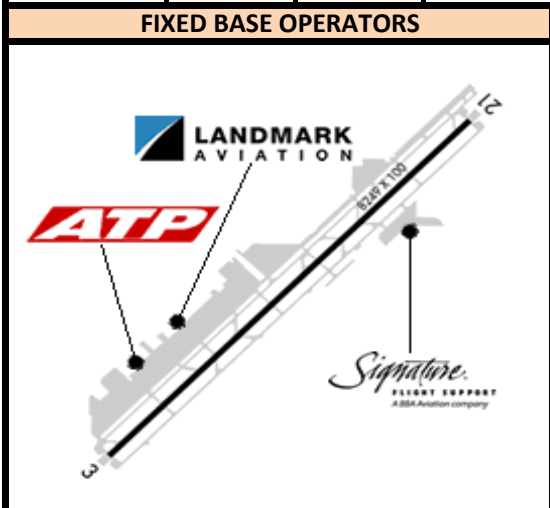


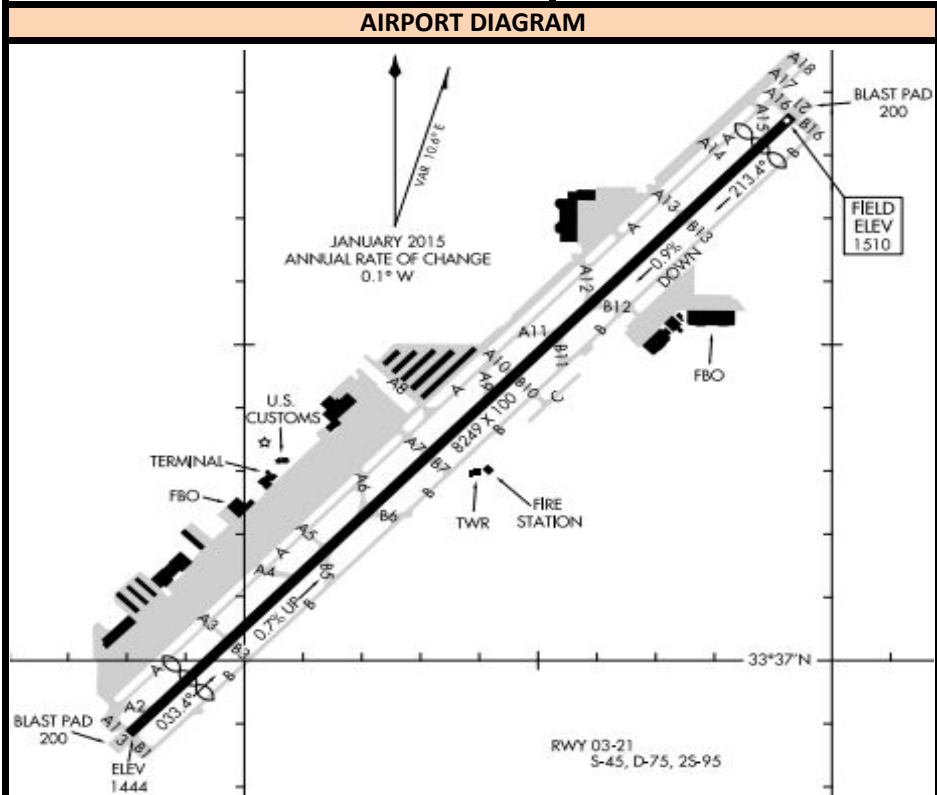
SCOTTSDALE AIRPORT (SCOTTSDALE, AZ) KSDL

Radio Frequencies			Runway Information (*Denotes Calm Wind Runway)						Airport Information	
ATIS	118.600		Runway	Heading	Length	Pattern	TPA Prop	TPA Jet	Hours	0600-2100
SDL_DEL	124.800	SDL_C	*3	032	8249	Left	2500	3000	Elevation	1510
SDL_GND	121.600	SDL_G	21	212	8249	Right	2500	3000	Class D	3999
SDL_TWR	119.900	SDL_T							Initial Alt	5000
PHX_B_APP	120.700	P50_B								

INSTRUMENT APPROACH PROCEDURES						STANDARD INSTRUMENT DEPARTURES			
RWY	APP	FREQ	OBS	I/F/AF	APP ALT	BANYRD THREE (RNAV)		LALUZ THREE (RNAV)	
	VOR-A	115.60	003	PXR	4200	FTHLS THREE (RNAV)		MAYSA THREE (RNAV)	
21	RNP		212	WLLMN	4000	IZZZO THREE (RNAV)		MARICOPA ONE (ODP)	
3	RNP-Y		032	HAWAI	4500	JONHH ONE		SCOTTSDALE SEVEN	
3	RNP-Z		032	NAAVE	6000	JUDTH THREE (RNAV)		SNOBL THREE (RNAV)	
	GPS-D		109	POURS	4600	KATMN THREE (RNAV)		YOTES THREE (RNAV)	
	GPS-E		003	PXR	4200				
	VOR-C	113.30	313	IWA	3500				



NEARBY NAVAIDS		
VORTAC		
PHOENIX	PXR	115.60
WILLIE	IWA	113.30
NDB		
FALCON FIELD	FFZ	281
CHANDLER	CHD	407



IFR RELEASES

- One In One Out Rule: P50 will either approve or not approve the control towers to use visual separation between IFR operations. Even if visual separation is approved, IFR releases are still mandatory. All releases will have a 3 minute void time. Example release: SDL_TWR: "Request release N123" PHX_APP: "N123 released" PHX_APP can amend a Standard Release, i.e. "N123 released maintain 4000"

- How this works:

- During IFR clearance, give standard altitude to maintain, or Climb via SID, whichever is appropriate for that specific aircraft at your airport.
- During taxi or when holding short of departure runway, request release.
- When released by PHX_APP click the 3:00 Minute timer in VRC. Depart the aircraft ASAP. If you're unable to clear the aircraft for takeoff within this time, request release again from PHX_APP.

AIRPORT SPECIFIC PROCEDURES

Runway 3 Standard Release:

- (SID or not) Turn left heading 250, maintain 5000

Runway 21 Standard Release:

- (SID or not) Turn right heading 285, maintain 5000