

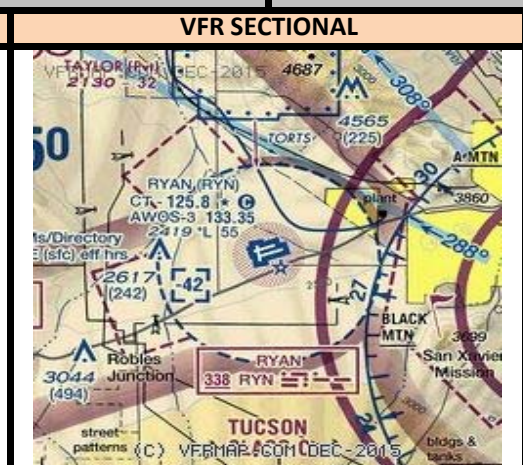
# RYAN FIELD AIRPORT (TUCSON, AZ) KRYN

Radio Frequencies			Runway Information (*Denotes Calm Wind Runway)					Airport Information		
RYN_GND	118.200	RYN_G	<b>Runway</b>	<b>Heading</b>	<b>Length</b>	<b>Pattern</b>	<b>TPA</b>		<b>Hours</b>	0600-2000
RYN_TWR	125.800	RYN_T	*6R	058	5503	Left	3200		<b>Elevation</b>	2419
TUS_DEP	125.100	U90_D	24L	238	5503	Left	3200		<b>Class D</b>	4199
TUS_APP	119.400	U90_A	*6L	058	4900	Left	3200		<b>Initial Alt</b>	<b>8000</b>
<b>U90 FREQ DEPENDENT ON TUS FLOW - CONTACT TRACON FOR PROPPER DEPARTURE FREQ</b>			24R	238	4900	Left	3200			
			15	155	4000	Left	3200			
			33	335	4000	Left	3200			

INSTRUMENT APPROACH PROCEDURES						STANDARD INSTRUMENT DEPARTURES	
RWY	APP	FREQ	OBS	I/F/AF	APP ALT	ALMON ONE (ODP, RNAV)	
6R	ILS/LOC	111.10	058	NIKEE	5000		
6R	NDB/DME	338	074	ITUZU	4700		

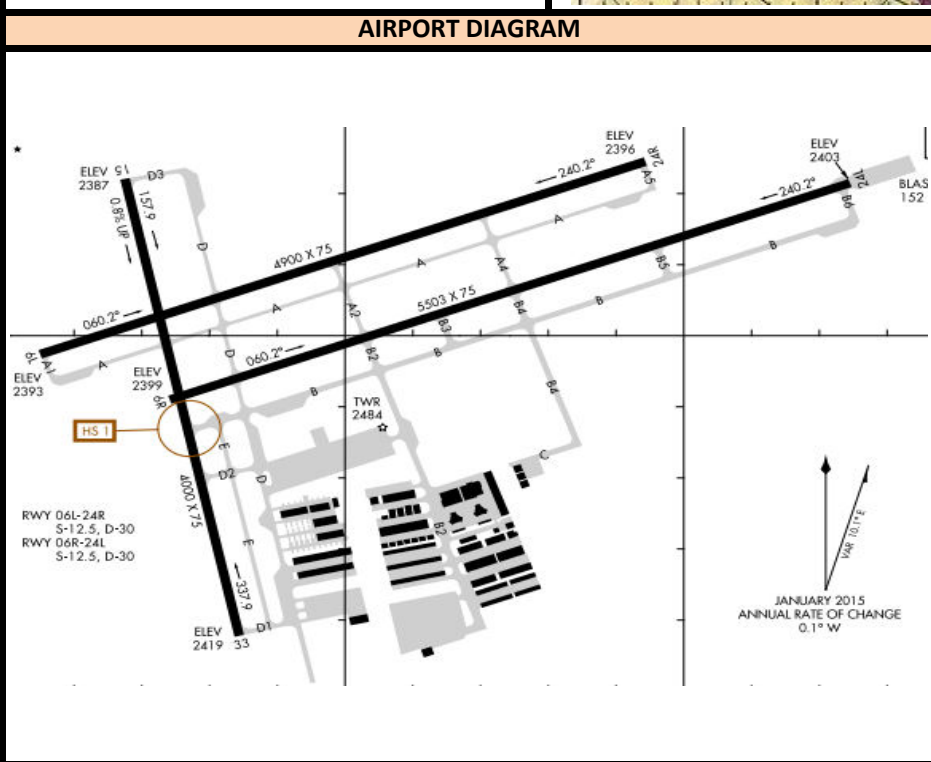
**FIXED BASE OPERATORS**

Velocity Air  
(No Map Available)



**NEARBY NAVAIDS**

VORTAC		
TUCSON	TUS	116.00
NDB		
RYAN	RYN	338
ROBLES	RBJ	220
MARANA	AVQ	245



**IFR RELEASES**

- One In One Out Rule: U90 will either approve or not approve the control towers to use visual separation between IFR operations. Even if visual separation is approved, IFR releases are still mandatory. All releases will have a 3 minute void time. Example release:  
 RYN\_TWR: "Request release N123" TUS\_APP: "N123 released"  
 TUS\_APP can amend a Standard Release, i.e. "N123 released maintain 7000"

- How this works:

1. During IFR clearance, give standard altitude to maintain, or Climb via SID, whichever is appropriate for that specific aircraft at your airport.
2. During taxi or when holding short of departure runway, request release.
3. When released by TUS\_APP click the 3:00 Minute timer in VRC. Depart the aircraft ASAP. If you're unable to clear the aircraft for takeoff within this time, request release again from TUS\_APP.

**AIRPORT SPECIFIC PROCEDURES**

Runway 6L/R, 15, 24R/L Standard Release:
- (SID 6R/24L ONLY) "Maintain 8000"
- (Neg SID) "Turn right heading 300, maintain 8000"
Runway 33 Standard Release:
- (Neg SID) "Fly heading 300, maintain 8000"