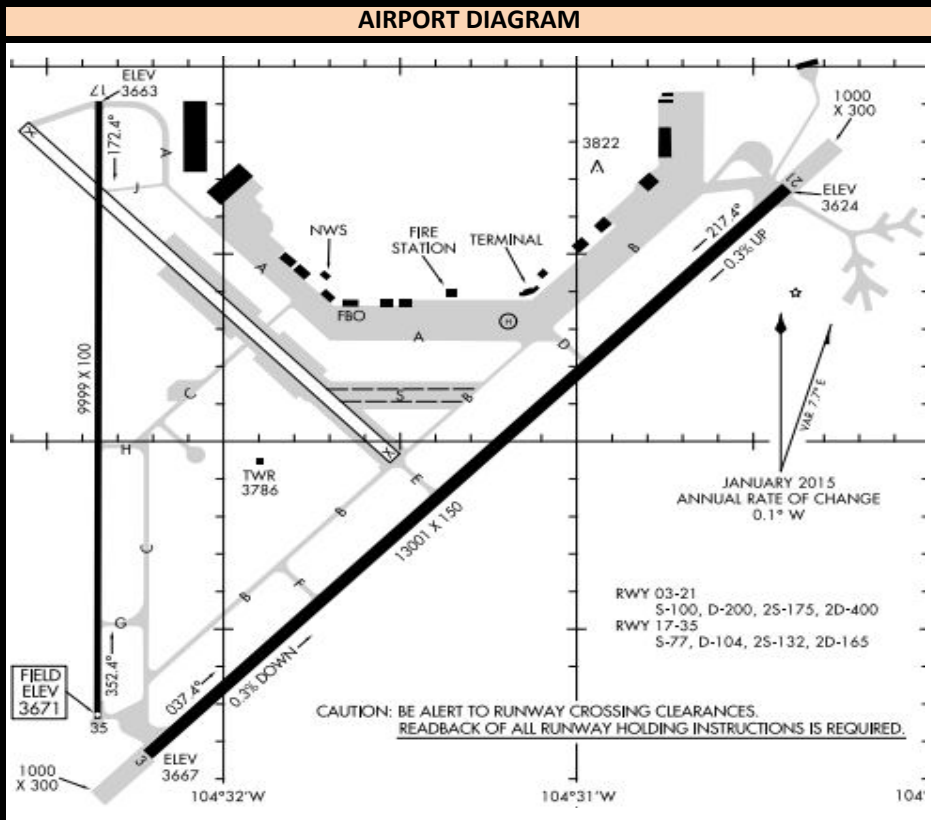


ROSWELL INTERNATIONAL AIR CENTER AIRPORT (ROSWELL, NM) KROW

Radio Frequencies			Runway Information (*Denotes Calm Wind Runway)						Airport Information	
ATIS	128.450		Runway	Heading	Length	Pattern	TPA PROP	TPA JET	Hours	0600-2100
ROW_DEL	132.870	ROW_C	3	035	13001	Right	4700	5200	Elevation	3671
ROW_GND	121.900	ROW_G	*21	215	13001	Left	4700	5200	Class D	6200
ROW_TWR	118.500	ROW_T	17	170	3662	Right	4700	5200	Initial Alt	17000
ROW_W_APP	118.500	ROW_W	35	350	3671	Left	4700	5200		
ROW_E_APP	119.600	ROW_E								

INSTRUMENT APPROACH PROCEDURES						STANDARD INSTRUMENT DEPARTURES					
RWY	APP	FREQ	OBS	I/F/AF	APP ALT	RWY	APP	FREQ	OBS	I/F/AF	APP ALT
17	GPS		170	HOGIG	6000						
35	GPS		350	KIGDE	6000	21	ILS/LOC	109.90	215	TOPAN	5600
3	LOC BC	109.90	035	MONKI	6000	3	GPS		035	GICEC	6300
	VOR-B	116.10	098	CME	6000	21	GPS		215	AQZED	6000
21	HI-ILS	109.90	215	JENOM	15000						

FIXED BASE OPERATORS	VFR SECTIONAL	NEARBY NAVAIDS												
<p style="text-align: center;">Avflight Roswell (Map Not Available)</p>		<table border="1" style="width: 100%; border-collapse: collapse;"> <thead> <tr style="background-color: #00a0e3; color: white;"> <th colspan="3" style="text-align: center;">VORTAC</th> </tr> </thead> <tbody> <tr> <td>CHISUM</td> <td>CME</td> <td>116.10</td> </tr> <tr style="background-color: #00a0e3; color: white;"> <th colspan="3" style="text-align: center;">NDB</th> </tr> <tr> <td>ARTESIA</td> <td>ATS</td> <td>414</td> </tr> </tbody> </table>	VORTAC			CHISUM	CME	116.10	NDB			ARTESIA	ATS	414
VORTAC														
CHISUM	CME	116.10												
NDB														
ARTESIA	ATS	414												



IFR RELEASES

- One In One Out Rule: ROW Approach will either approve or not approve the control towers to use visual separation between IFR operations. Even if visual separation is approved, IFR releases are still mandatory. All releases will have a 3 minute void time. Example release:
 ROW_TWR: "Request release N123" ROW_APP: "N123 released"
 ROW_APP can amend a Standard Release, i.e. "N123 released maintain 15000"

- How this works:

1. During IFR clearance, give standard altitude to maintain, or Climb via SID, whichever is appropriate for that specific aircraft at your airport.
2. During taxi or when holding short of departure runway, request release.
3. When released by ROW_APP click the 3:00 Minute timer in VRC. Depart the aircraft ASAP. If you're unable to clear the aircraft for takeoff within this time, request release again from ROW_APP.

AIRPORT SPECIFIC PROCEDURES

All Runways Standard Release:
- (ALL DEPARTURES) "Fly runway heading, maintain 17000"