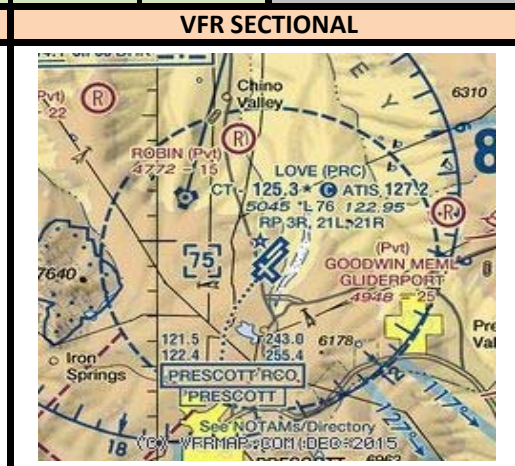
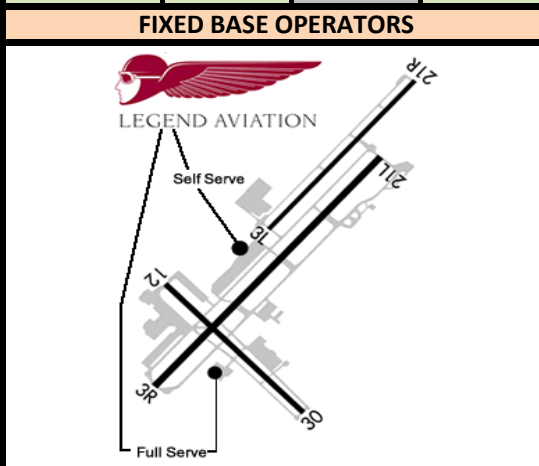


# ERNEST A LOVE FIELD AIRPORT (PRESCOTT, AZ) KPRC

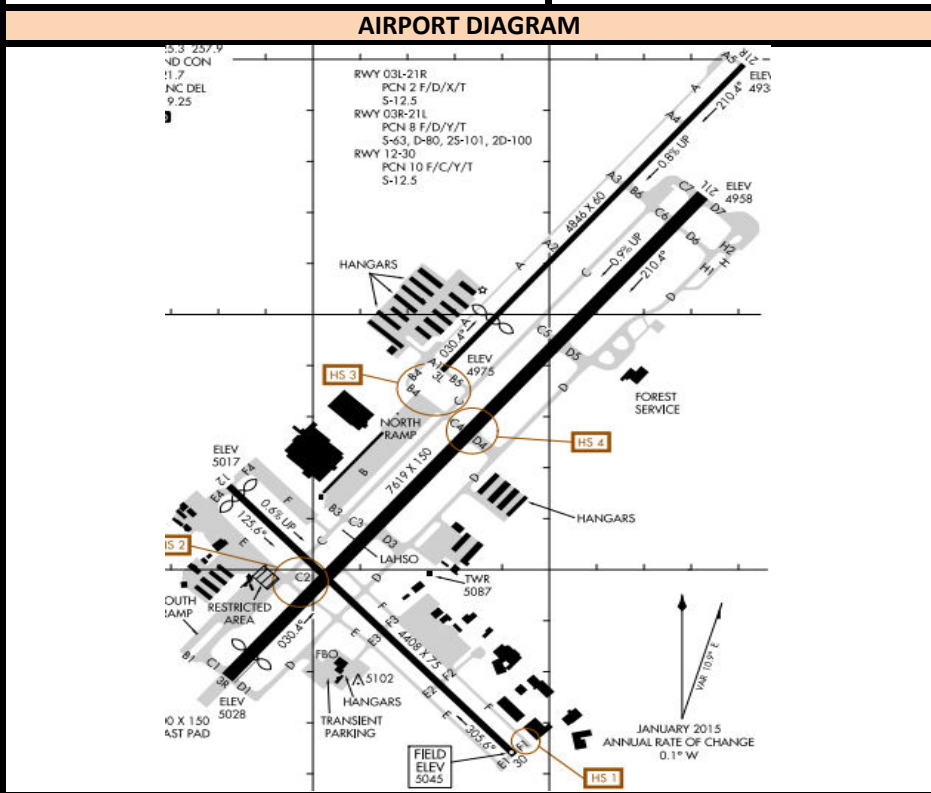
Radio Frequencies			Runway Information (*Denotes Calm Wind Runway)					Airport Information		
ATIS	127.200		<b>Runway</b>	<b>Heading</b>	<b>Length</b>	<b>Pattern</b>	<b>TPA Prop</b>	<b>TPA T Prop / Jet</b>	<b>Hours</b>	0600-2200
PRC_GND	121.700	PRC_G	3R	028	7619	Right	6000	6500	<b>Elevation</b>	5045
PRC_TWR	125.300	PRC_T	*21L	208	7619	Right	6000	6500	<b>Class D</b>	7500
PHX_J_APP	133.570	P50_J	3L	28	4846	Left	6000	6500	<b>Initial Alt</b>	<b>10000</b>
			*21R	208	4846	Right	6000	6500		
			12	124	4408	Left	6000	6500		
			30	304	4408	Left	6000	6500		

INSTRUMENT APPROACH PROCEDURES						STANDARD INSTRUMENT DEPARTURES	
<b>RWY</b>	<b>APP</b>	<b>FREQ</b>	<b>OBS</b>	<b>I/F/AF</b>	<b>APP ALT</b>	PRESCOTT ONE (ODP)	
3R	GPS		028	GOVTE	8100		
12	VOR	114.10	125	DRK	8500		
21L	ILS/LOC	108.50	208	HUMTY	7900		
3R	RNP-Z		028	HOLEB	9800		
12	GPS		123	IRODY	7200		
21L	GPS		208	PEYVU	9100		



### NEARBY NAVAIDS

VORTAC		
DRAKE	DRK	114.10
<b>LAHSO</b>		
<b>LDG RWY</b>	<b>H/S POINT</b>	<b>AVBL RWY</b>
21	12-30	5500



### IFR RELEASES

- One In One Out Rule: P50 will either approve or not approve the control towers to use visual separation between IFR operations. Even if visual separation is approved, IFR releases are still mandatory. All releases will have a 3 minute void time. Example release: PRC\_TWR: "Request release N123" PHX\_APP: "N123 released" PHX\_APP can amend a Standard Release, i.e. "N123 released maintain 4000"

- How this works:

1. During IFR clearance, give standard altitude to maintain, or Climb via SID, whichever is appropriate for that specific aircraft at your airport.
2. During taxi or when holding short of departure runway, request release.
3. When released by PHX\_APP click the 3:00 Minute timer in VRC. Depart the aircraft ASAP. If you're unable to clear the aircraft for takeoff within this time, request release again from PHX\_APP.

### AIRPORT SPECIFIC PROCEDURES

Runway 21 Standard Release:

- (All Departures) "Fly runway heading, maintain 12000"

Runway 3 Standard Release:

- (All Deps) "Turn right heading 090, maintain 12000"