

LUKE AIR FORCE BASE (GLENDALE, AZ) KLUF

Radio Frequencies			Runway Information (*Denotes Calm Wind Runway)						Airport Information		
ATIS	134.920		Runway	Heading	Length	Pattern	TPA Convl	TPA OVERHEAD	Hours	0630-2230	
LUF_DEL	126.250	LUF_C	3L	032	10012	Right	2100	2600	Elevation	1085	
LUF_GND	133.170	LUF_G	*21R	212	10012	Left	2100	2600	Class D	3999	
LUF_TWR	119.100	LUF_T	3R	032	9904	Right	2100	2600	Initial Alt	5000	
LUF_N_APP	118.150	LUF_N	*21L	212	9904	Left	2100	2600			
LUF_S_APP	125.450	LUF_S	NORTH DEPARTURES TO LUF_N_APP, SOUTH DEPARTURES TO LUF_S_APP,								
PHX_B_APP	120.700	P50 B	ALL DEPARTURES TO PHX_B_APP WHEN LUF_APP CLOSED.								

INSTRUMENT APPROACH PROCEDURES						STANDARD INSTRUMENT DEPARTURES			
RWY	APP	FREQ	OBS	I/F/AF	APP ALT	BUSCO NINE		TANKZ ONE	
21R	HI-TACAN	Chan 77	205	LENNI	12000	LUKE ONE		TIRON SEVEN	
3R	HI-ILS	108.70	030	LENNI	12000	NORDY ONE			
21L	HI-ILS	110.90	210	LENNI	12000				
3L	HI-TACAN	Chan 77	032	LENNI	12000				
3R	HI-TACAN	Chan 77	026	LENNI	12000				
21L	HI-TACAN	Chan 77	213	LENNI	12000				

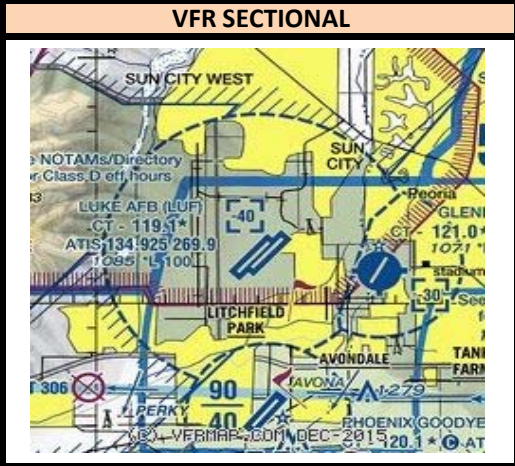
MILITARY PHRASEOLOGY

Overhead Break:
 - "KILLR12 pattern altitude 2600, report initial."
 - "KILLR12, break left at midfield, report break."

Simulated Flameout:
 - "DAGGR15, runway 21L, report high key."
 - "DAGGR15, report low key."

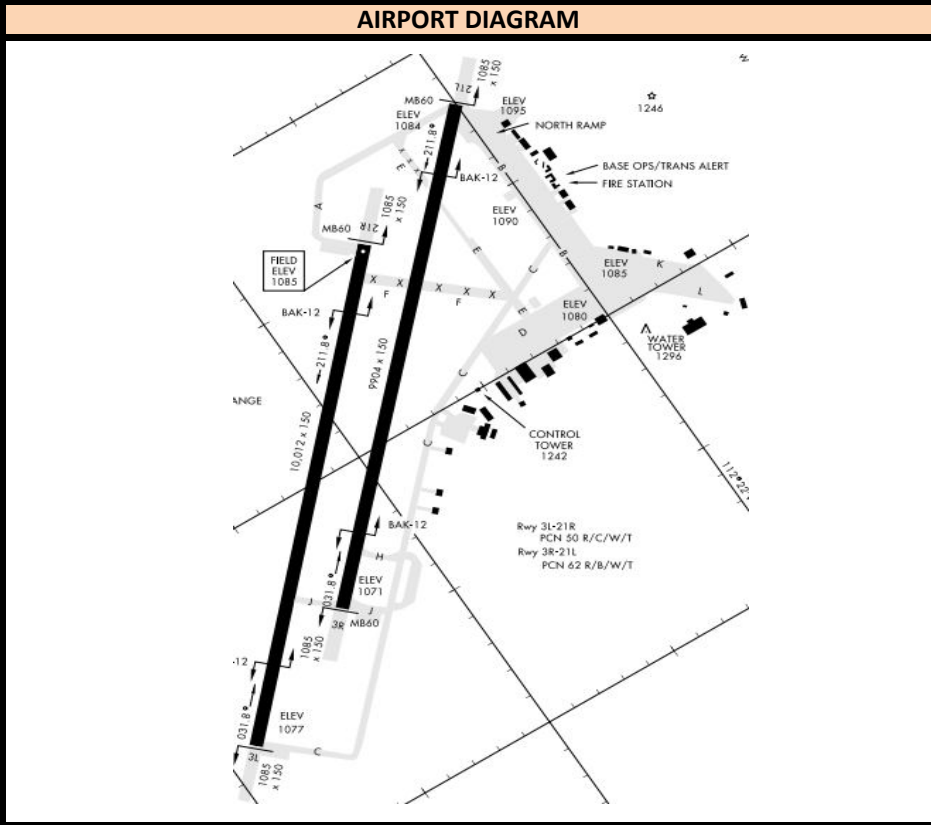
Landing Clearance:
 - "VIPER7, check wheels down, wind calm runway 21L cleared to land."

NOTE: NOT ALL FLIGHT SIM MILITARY AIRCRAFT HAVE THE ABILITY TO USE TACANS, AND NOT ALL FLIGHT SIM SCENERY INCLUDES TACANS. NEVER ASSIGN UNLESS BY PILOT REQUEST.



NEARBY NAVAIDS

TACAN		
LUKE	LUF	Chan 77
VORTAC		
PHOENIX	PXR	115.60
BUCKEYE	BXK	110.60
GILA BEND	GBN	116.60
WILLIE	LUF	113.30
NDB		
FALCON FIELD	FFZ	281
CHANDLER	CHD	407



IFR RELEASES

- One In One Out Rule: P50 will either approve or not approve the control towers to use visual separation between IFR operations. Even if visual separation is approved, IFR releases are still mandatory. All releases will have a 3 minute void time. Example release: LUF_TWR: "Request release N123" PHX_APP: "N123 released" PHX_APP can amend a Standard Release, i.e. "N123 released maintain 4000"

- How this works:

1. During IFR clearance, give standard altitude to maintain, or Climb via SID, whichever is appropriate for that specific aircraft at your airport.
2. During taxi or when holding short of departure runway, request release.
3. When released by PHX_APP click the 3:00 Minute timer in VRC. Depart the aircraft ASAP. If you're unable to clear the aircraft for takeoff within this time, request release again from PHX_APP.

AIRPORT SPECIFIC PROCEDURES

Runway 21L/R Standard Release:

- (On SID, All Pilot Nav) "Climb via SID"
- (Negative SID) "Fly runway heading, maintain 5000"

Runway 3R/L Standard Release:

- (On SID, All Pilot Nav) "Climb via SID"
- (Negative SID) "Fly runway heading, maintain 5000"