

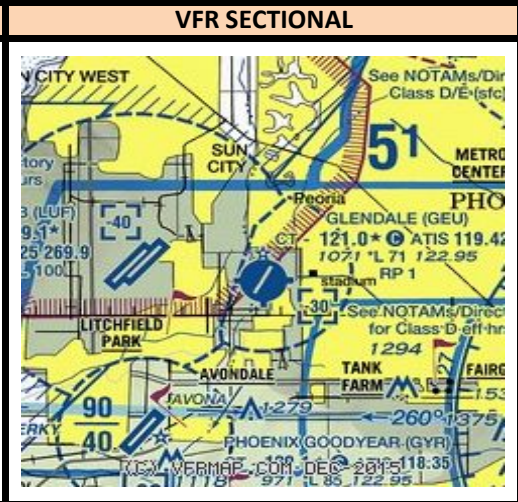
GLENDALE MUNICIPAL AIRPORT (GLENDALE, AZ) KGEU

Radio Frequencies			Runway Information (*Denotes Calm Wind Runway)					Airport Information			
ATIS	119.420		Runway	Heading	Length	Pattern	TPA Heli / UL	TPA HP Prop / Jet	Hours	0600-2030	
GEU_GND	118.000	GEU_G	1	013	7150	Right	1700	2600	Elevation	1071	
GEU_TWR	121.000	GEU_T	*19	193	7150	Left	1700	2600	Class D	2999	
PHX_B_APP	120.700	P50_B	NORTH DEPARTURES TO LUF_N_APP							Initial Alt	5000
LUF_N_APP	118.150	LUF_N	SOUTH DEPARTURES TO PHX_B_APP								

INSTRUMENT APPROACH PROCEDURES						STANDARD INSTRUMENT DEPARTURES		
RWY	APP	FREQ	OBS	I/F/AF	APP ALT			
1	GPS		014	AGERE	5000	BNYRD THREE (RNAV)		KATMN THREE (RNAV)
19	GPS		194	BAPPA	4000	DRAKE TWO (ODP, RNAV)		LALUZ THREE (RNAV)
						FTHLS THREE (RNAV)		MAYSA THREE (RNAV)
						GLENDALE ONE		SNOBL THREE (RNAV)
						IZZZO THREE (RNAV)		YOTES THREE (RNAV)
						JUDTH THREE (RNAV)		

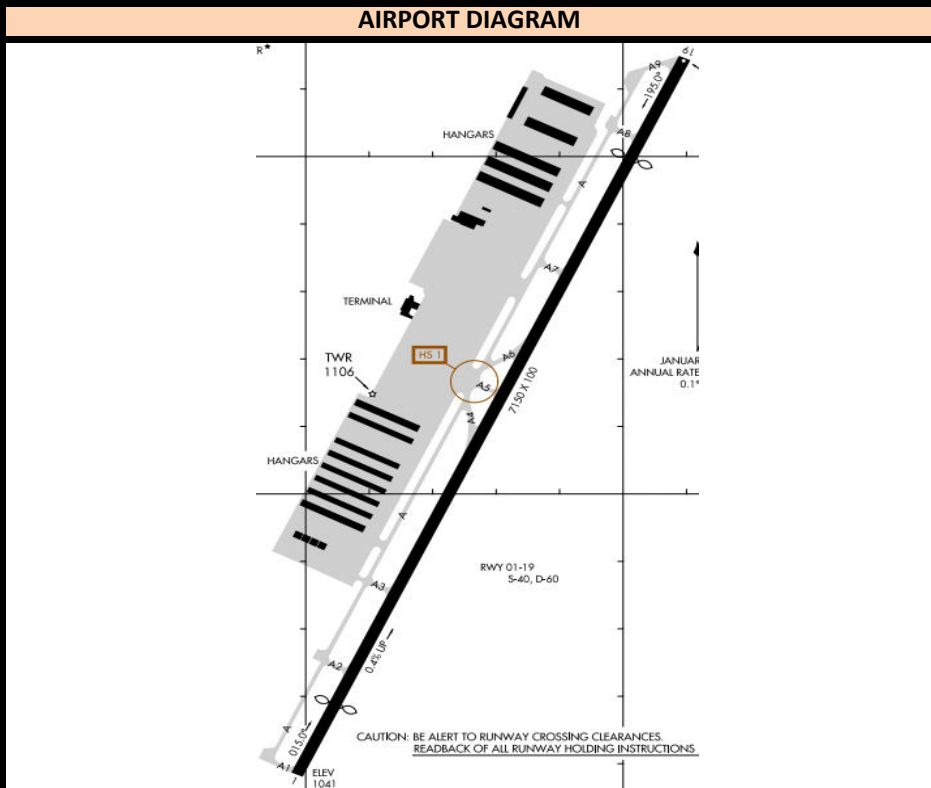
FIXED BASE OPERATORS

Glendale Aviation Services
(Map Not Available)



NEARBY NAVAIDS

VORTAC		
PHOENIX	PXR	115.60
BUCKEYE	BXK	110.60
WILLIE	IWA	113.30
GILA BEND	GBN	116.60
NDB		
FALCON FIELD	FFZ	281
CHANDLER	CHD	407



IFR RELEASES

- One In One Out Rule: P50/LUF will either approve or not approve the control towers to use visual separation between IFR operations. Even if visual separation is approved, IFR releases are still mandatory. All releases will have a 3 minute void time. Example release:
 GEU_TWR: "Request release N123" PHX_APP: "N123 released"
 PHX_APP can amend a Standard Release, i.e. "N123 released maintain 4000"
 - How this works:
 1. During IFR clearance, give standard altitude to maintain, or Climb via SID, whichever is appropriate for that specific aircraft at your airport.
 2. During taxi or when holding short of departure runway, request release.
 3. When released by PHX_APP click the 3:00 Minute timer in VRC. Depart the aircraft ASAP. If you're unable to clear the aircraft for takeoff within this time, request release again from PHX_APP.

AIRPORT SPECIFIC PROCEDURES

Runway 19 Standard Release:
 - (All Departures) "Fly heading 200, maintain 5000"
 Runway 1 Standard Release:
 - (All Departures) "Fly runway heading, maintain 5000"