

SIERRA VISTA MUNICIPAL AIRPORT-LIBBY ARMY AIRFIELD (FORT HUACHUCA/SIERRA VISTA, AZ) KFHU

| Radio Frequencies | | Runway Information (*Denotes Calm Wind Runway) | | | | | | | Airport Information | |
|-------------------|---------------|--|----------------|---------------|----------------|-----------------|--------------------|--------------------|---------------------|--|
| ATIS | 134.750 | Runway | Heading | Length | Pattern | TPA Prop | TPA Hei/Jet | Hours | Continuous | |
| FHU_GND | 121.700 FHU_G | 8 | 080 | 12001 | Left | 5700 | 5500/6200 | Elevation | 4719 | |
| FHU_TWR | 124.950 FHU_T | *26 | 260 | 12001 | Right | 5700 | 5500/6200 | Class D | 7200 | |
| FHU_APP | 127.050 FHU_A | 12 | 117 | 5366 | Left | 5700 | 5500/6200 | Initial Alt | 17000 | |
| | | 30 | 297 | 5366 | Right | 5700 | 5500/6200 | | | |
| | | 3 | 027 | 4285 | Left | 5700 | 5500/6200 | | | |
| | | 21 | 207 | 4285 | Right | 5700 | 5500/6200 | | | |

| INSTRUMENT APPROACH PROCEDURES | | | | | |
|--------------------------------|---------|---------|-----|--------|---------|
| RWY | APP | FREQ | OBS | I/F/AF | APP ALT |
| 26 | GPS | | 257 | CAYLA | 7400 |
| 26 | VOR | 113.60 | 259 | CITOS | 8200 |
| 8 | TACAN | Chan 53 | 081 | MESCA | 10000 |
| 26 | TACAN | Chan 53 | 251 | TOMBS | 9500 |
| 26 | NDB | 410 | 255 | DAO | 9600 |
| 26 | ILS/LOC | 109.90 | 257 | KAGEY | 8200 |
| 8 | GPS | | 077 | ZEMBI | 8500 |

| STANDARD INSTRUMENT DEPARTURES | | |
|--------------------------------|--|--|
| | | |

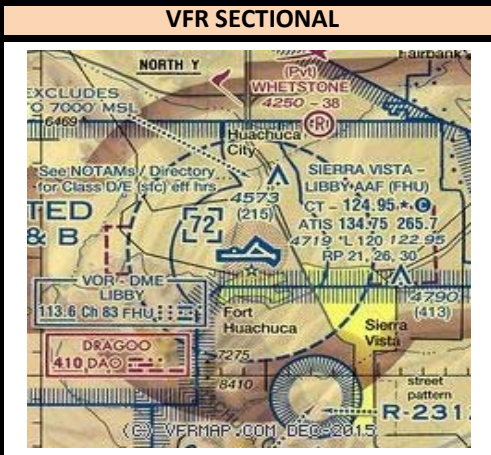
MILITARY PHRASEOLOGY

Overhead Break:
 - "KILLR12 pattern altitude 6200, report initial."
 - "KILLR12, break right at midfield, report break."

Simulated Flameout:
 - "DAGGR15, runway 26, report high key."
 - "DAGGR15, report low key."

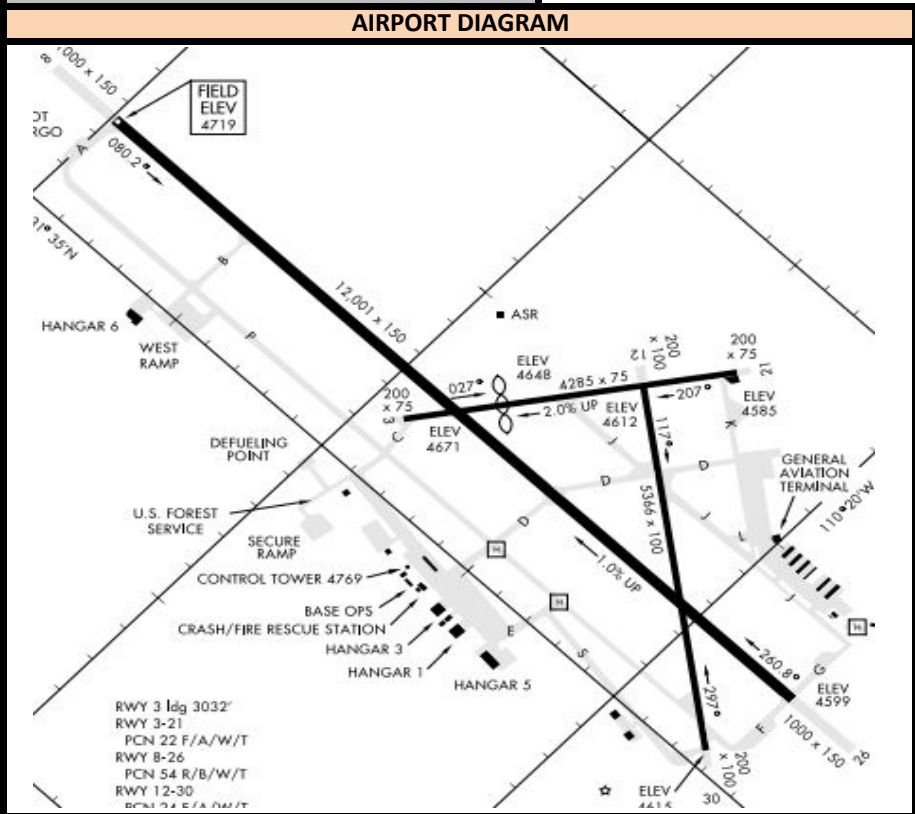
Landing Clearance:
 - "VIPER7, check wheels down, wind calm runway 26 cleared to land."

NOTE: NOT ALL FLIGHT SIM MILITARY AIRCRAFT HAVE THE ABILITY TO USE TACANS, AND NOT ALL FLIGHT SIM SCENERY INCLUDES TACANS. NEVER ASSIGN UNLESS BY PILOT REQUEST.



NEARBY NAVAIDS

| VOR/DME | | |
|---------|-----|--------|
| DOUGLAS | DUG | 108.80 |
| VORTAC | | |
| LIBBY | FHU | 113.60 |
| NOGALES | OLS | 108.20 |
| NDB | | |
| DRAGOO | DAO | 410 |
| NOGALES | ENZ | 394 |
| NOGALES | NOG | 265 |



IFR RELEASES

- One In One Out Rule: FHU Approach will either approve or not approve the control towers to use visual separation between IFR operations. Even if visual separation is approved, IFR releases are still mandatory. All releases will have a 3 minute void time. Example release:
 FHU_TWR: "Request release N123" FHU_APP: "N123 released"
 FHU_APP can amend a Standard Release, i.e. "N123 released maintain 15000"

- How this works:

1. During IFR clearance, give standard altitude to maintain, or Climb via SID, whichever is appropriate for that specific aircraft at your airport.
2. During taxi or when holding short of departure runway, request release.
3. When released by FHU_APP click the 3:00 Minute timer in VRC. Depart the aircraft ASAP. If you're unable to clear the aircraft for takeoff within this time, request release again from FHU_APP.

AIRPORT SPECIFIC PROCEDURES

All Runways Standard Release:
 - (All Departures) "Fly runway heading, maintain 17000"