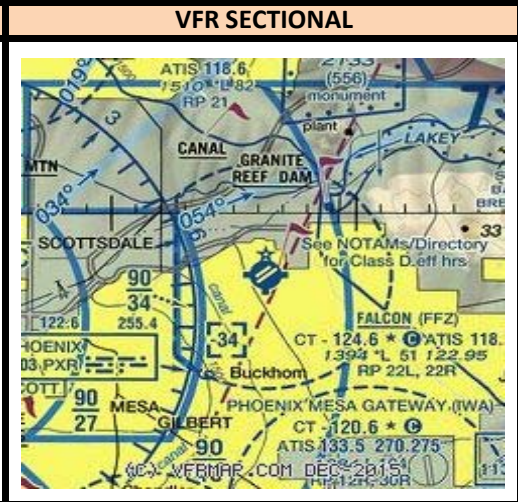
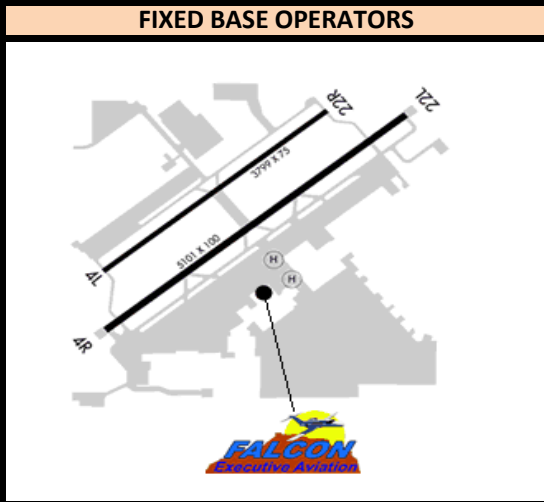


FALCON FIELD AIRPORT (MESA, AZ) KFFZ

Radio Frequencies			Runway Information (*Denotes Calm Wind Runway)						Airport Information	
ATIS	118.250		Runway	Heading	Length	Pattern	TPA Prop	TPA Jet/Heli	Hours	0530-2100
FFZ_GND	121.300	FFZ_G	4R*	039	5101	Left	2400	2900 / 1900	Elevation	1394
FFZ_TWR	124.600	FFZ_T	22L	219	5101	Right	2400	2900 / 1900	Class D	3499
PHX_B_APP	120.700	P50_B	*4L	039	3799	Left	2400	2900 / 1900	Initial Alt	5000
			22R	219	3799	Right	2400	2900 / 1900		

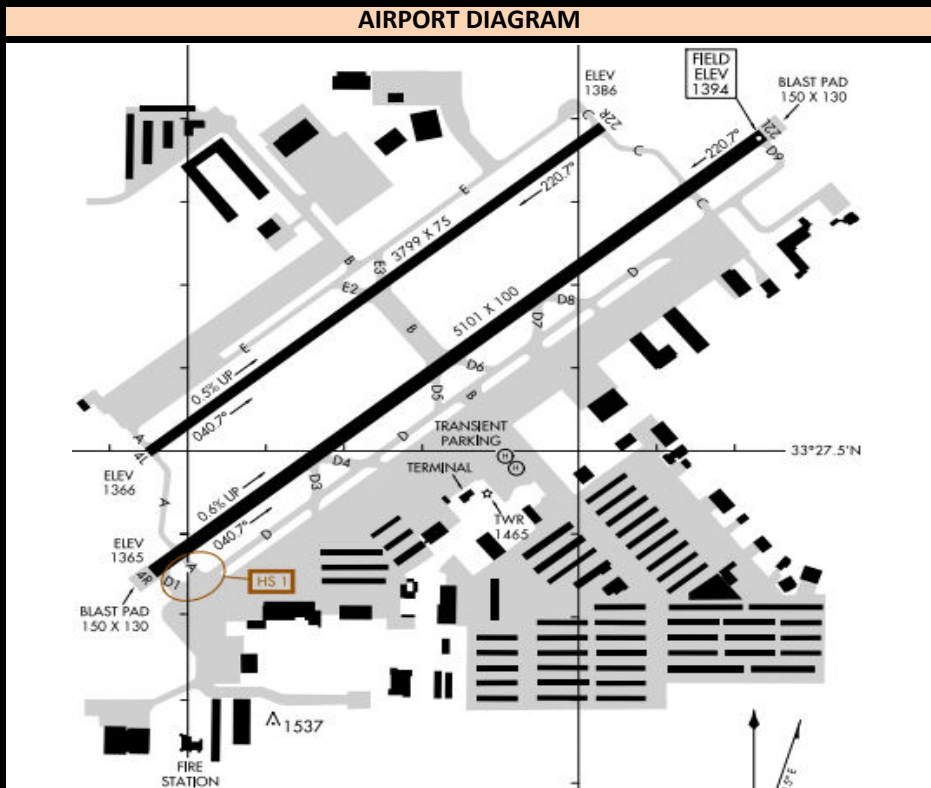
INSTRUMENT APPROACH PROCEDURES						STANDARD INSTRUMENT DEPARTURES	
RWY	APP	FREQ	OBS	I/F/AF	APP ALT	MESA ONE (ODP)	
4R	GPS		039	SACAT	3200	SACAT ONE (RNAV)	
4L	GPS		039	SACAT	3200		
	GPS-B		122	AVENT	6000		



NEARBY NAVAIDS

VORTAC		
PHOENIX	PXR	115.60
WILLIE	IWA	113.30
STANDFIELD	TFD	114.80

NDB		
FALCON FIELD	FFZ	281
CHANDLER	CHD	407



IFR RELEASES

- One In One Out Rule: P50 will either approve or not approve the control towers to use visual separation between IFR operations. Even if visual separation is approved, IFR releases are still mandatory. All releases will have a 3 minute void time. Example release: FFZ_TWR: "Request release N123" PHX_APP: "N123 released" PHX_APP can amend a Standard Release, i.e. "N123 released maintain 4000"

- How this works:

1. During IFR clearance, give standard altitude to maintain, or Climb via SID, whichever is appropriate for that specific aircraft at your airport.
2. During taxi or when holding short of departure runway, request release.
3. When released by PHX_APP click the 3:00 Minute timer in VRC. Depart the aircraft ASAP. If you're unable to clear the aircraft for takeoff within this time, request release again from PHX_APP.

AIRPORT SPECIFIC PROCEDURES

Runway 4L/R Standard Release:
- (SID, all pilot nav) "Climb via SID"
- (Neg SID): "Turn right heading 220, maintain 5000"
Runway 22L/R Standard Release:
- (SID, all pilot nav) "Climb via SID"
- (Neg SID): "Fly runway heading, maintain 5000"