

# CANNON AIR FORCE BASE (CLOVIS, NM) KCVS

Radio Frequencies			Runway Information (*Denotes Calm Wind Runway)						Airport Information	
ATIS	119.100		Runway	Heading	Length	Pattern	TPA	TPA OVERHEAD	Hours	Continuous
CVS_DEL	120.200	CVS_C	4	035	4275	Left	5800	6300	Elevation	4295
CVS_GND	121.900	CVS_G	*22	215	4275	Left	5800	6300	Class D	6800
CVS_TWR	120.400	CVS_T	13	125	4293	Left	5800	6300	Initial Alt	<b>17000</b>
CVS_APP	118.420	CVS_A	31	305	4266	Left	5800	6300		

INSTRUMENT APPROACH PROCEDURES						STANDARD INSTRUMENT DEPARTURES					
RWY	APP	FREQ	OBS	I/F/AF	APP ALT	RWY	APP	FREQ	OBS	I/F/AF	APP ALT
4	ILS/LOC	108.50	038	JEBES	5800	22	GPS		218	HEKDI	6000
13	ILS/LOC	110.35	128	LERAY	5900	31	GPS		305	SOPL	7000
22	ILS/LOC	109.70	218	FETEP	5600	4	TACAN	Chan 53	048	CLINK	7000
31	ILS/LOC	108.30	308	HOMEP	5900	13	TACAN	Chan 53	120	MESBE	6100
4	GPS		038	OPKUE	7000						
13	GPS		125	ZUNEN	8000						
22	TACAN	Chan 53	212	HEDOB	7000						
31	TACAN	Chan 53	316	CLINK	7000						

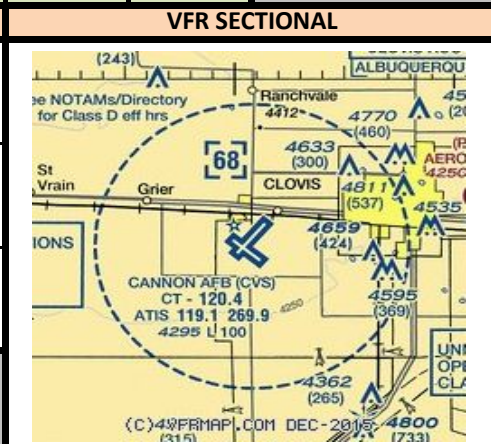
**MILITARY PHRASEOLOGY**

Overhead Break:  
 - "KILLR12 pattern altitude 6300, report initial."  
 - "KILLR12, break left at midfield, report break."

Simulated Flameout:  
 - "DAGGR15, runway 22, report high key."  
 - "DAGGR15, report low key."

Landing Clearance:  
 - "VIPER7, check wheels down, wind calm runway 22 cleared to land."

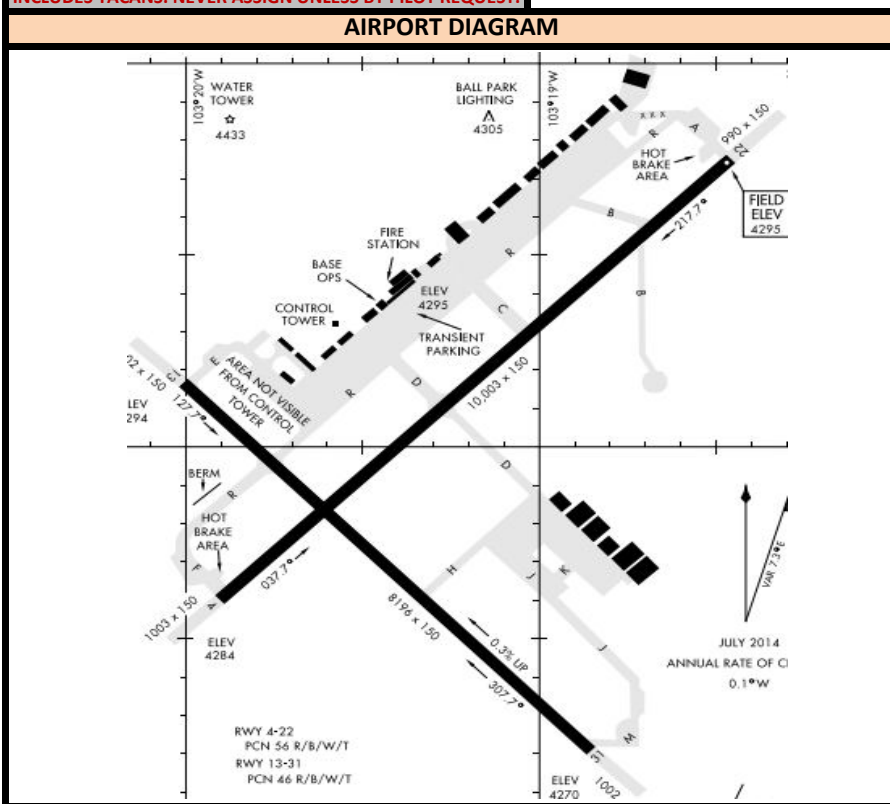
NOTE: NOT ALL FLIGHT SIM MILITARY AIRCRAFT HAVE THE ABILITY TO USE TACANS, AND NOT ALL FLIGHT SIM SCENERY INCLUDES TACANS. NEVER ASSIGN UNLESS BY PILOT REQUEST.



**NEARBY NAVAIDS**

TACAN		
CANNON	CVS	Chan 53

VORTAC		
TEXICO	TXO	112.20



**IFR RELEASES**

- One In One Out Rule: CVS Approach will either approve or not approve the control towers to use visual separation between IFR operations. Even if visual separation is approved, IFR releases are still mandatory. All releases will have a 3 minute void time. Example release: CVS\_TWR: "Request release N123" CVS\_APP: "N123 released" CVS\_APP can amend a Standard Release, i.e. "N123 released maintain 15000"

- How this works:

1. During IFR clearance, give standard altitude to maintain, or Climb via SID, whichever is appropriate for that specific aircraft at your airport.
2. During taxi or when holding short of departure runway, request release.
3. When released by CVS\_APP click the 3:00 Minute timer in VRC. Depart the aircraft ASAP. If you're unable to clear the aircraft for takeoff within this time, request release again from CVS\_APP.

**AIRPORT SPECIFIC PROCEDURES**

All Runways Standard Release:  
 - (ALL DEPARTURES) "Fly runway heading, maintain 17000"