

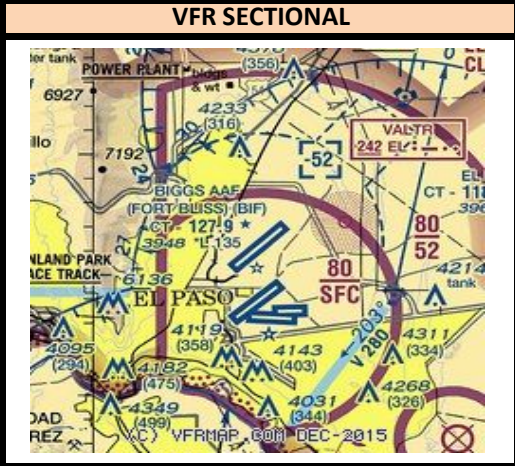
# BIGGS ARMY AIRFIELD (FORT BLISS/EL PASO, TX) KBIF

Radio Frequencies			Runway Information (*Denotes Calm Wind Runway)						Airport Information	
ATIS	120.000		<b>Runway</b>	<b>Heading</b>	<b>Length</b>	<b>Pattern</b>	<b>TPA Prop/TP</b>	<b>TPA Heli/Jet</b>	<b>Hours</b>	0600 - 2200
BIF_DEL	125.000	BIF_C	3	036	13554	Left	5000/5500	4500/6000	<b>Elevation</b>	3948
BIF_GND	121.600	BIF_G	*21	216	13554	Right	5000/5500	4500/6000	<b>Class D</b>	5199
BIF_TWR	127.900	BIF_T							<b>Initial Alt</b>	17000
ELP_DEP	121.300	ELP_D								
ELP_S_APP	119.150	ELP_S								
ELP_N_APP	124.250	ELP_N								

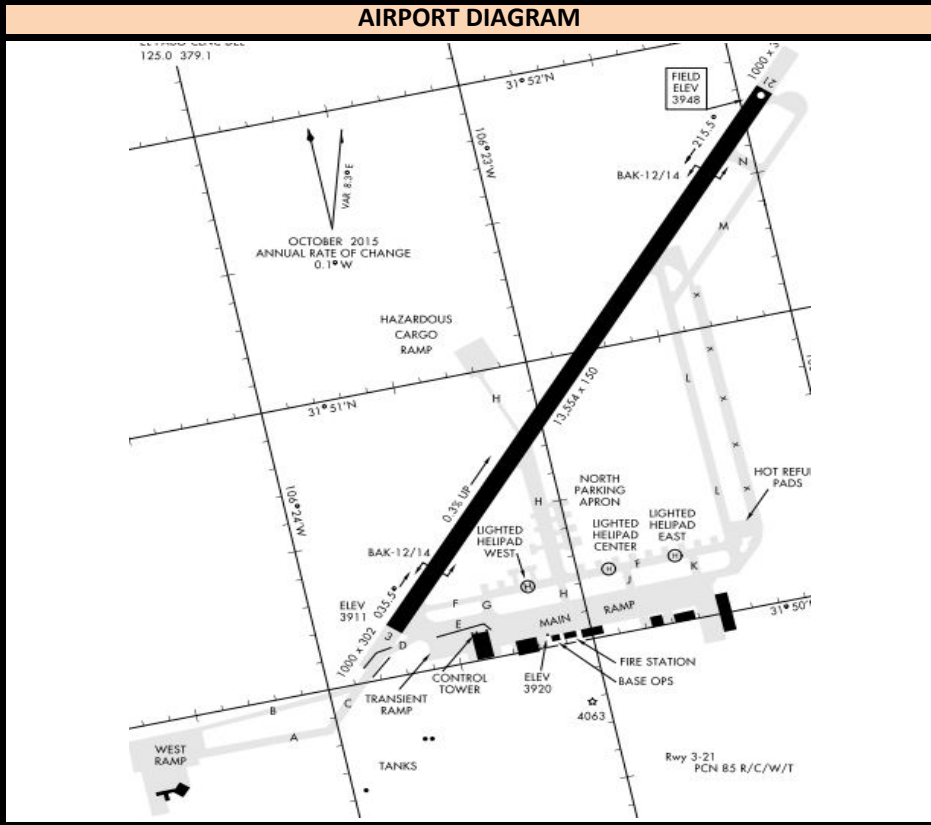
INSTRUMENT APPROACH PROCEDURES					
RWY	APP	FREQ	OBS	I/F/AF	APP ALT
21	GPS		212	PIERS	6800
21	VOR/TAC	112.40/71	210	EWM	6500

STANDARD INSTRUMENT DEPARTURES					

MILITARY PHRASEOLOGY
Overhead Break: - "KILLR12 pattern altitude 6000, report initial." - "KILLR12, break right at midfield, report break."
Simulated Flameout: - "DAGGR15, runway 21, report high key." - "DAGGR15, report low key."
Landing Clearance: - "VIPER7, check wheels down, wind calm runway 21 cleared to land."
NOTE: NOT ALL FLIGHT SIM MILITARY AIRCRAFT HAVE THE ABILITY TO USE TACANS, AND NOT ALL FLIGHT SIM SCENERY INCLUDES TACANS. NEVER ASSIGN UNLESS BY PILOT REQUEST.



NEARBY NAVAIDS		
VORTAC		
EL PASO	ELP	115.20
NEWMAN	EWM	112.40
VOR/DME		
CIUDAD JUAREZ	CJS	338
NDB		
VALTR	EL	242



### IFR RELEASES

- One In One Out Rule: ELP Approach will either approve or not approve the control towers to use visual separation between IFR operations. Even if visual separation is approved, IFR releases are still mandatory. All releases will have a 3 minute void time. Example release:  
BIF\_TWR: "Request release N123" ELP\_APP: "N123 released"  
ELP\_APP can amend a Standard Release, i.e. "N123 released maintain 15000"

- How this works:

1. During IFR clearance, give standard altitude to maintain, or Climb via SID, whichever is appropriate for that specific aircraft at your airport.
2. During taxi or when holding short of departure runway, request release.
3. When released by ELP\_APP click the 3:00 Minute timer in VRC. Depart the aircraft ASAP. If you're unable to clear the aircraft for takeoff within this time, request release again from ELP\_APP.

AIRPORT SPECIFIC PROCEDURES
Runway 3 Standard Release: - (All Departures) "Fly runway heading, maintain 17000"
Runway 21 Standard Release: - (All Departures) "Fly heading 190, maintain 17000"