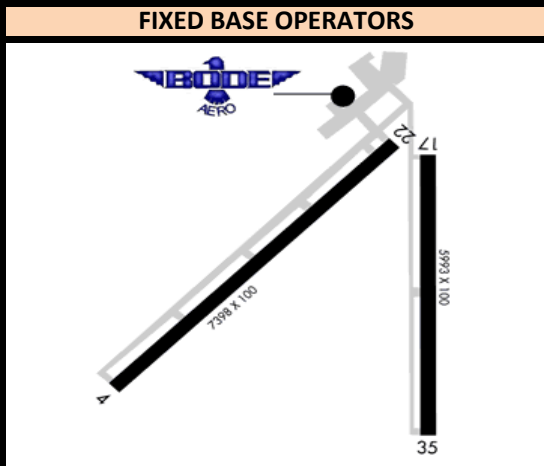


DOUBLE EAGLE II AIRPORT (ALBUQUERQUE, NM) KAEG

Radio Frequencies			Runway Information (*Denotes Calm Wind Runway)						Airport Information	
AEQ_GND	121.620	AEQ_G	Runway	Heading	Length	Pattern	TPA PROP	TPA JET	Hours	0600-2200
AEQ_TWR	120.150	AEQ_T	*4	035	7398	Left	6900	7400	Elevation	5837
ABQ_N_APP	127.400	ABQ_N	22	215	7398	Right	6900	7400	Class D	7500
			17	169	5806	Left	6900	7400	Initial Alt	7000/10000
			35	349	5806	Right	6900	7400		

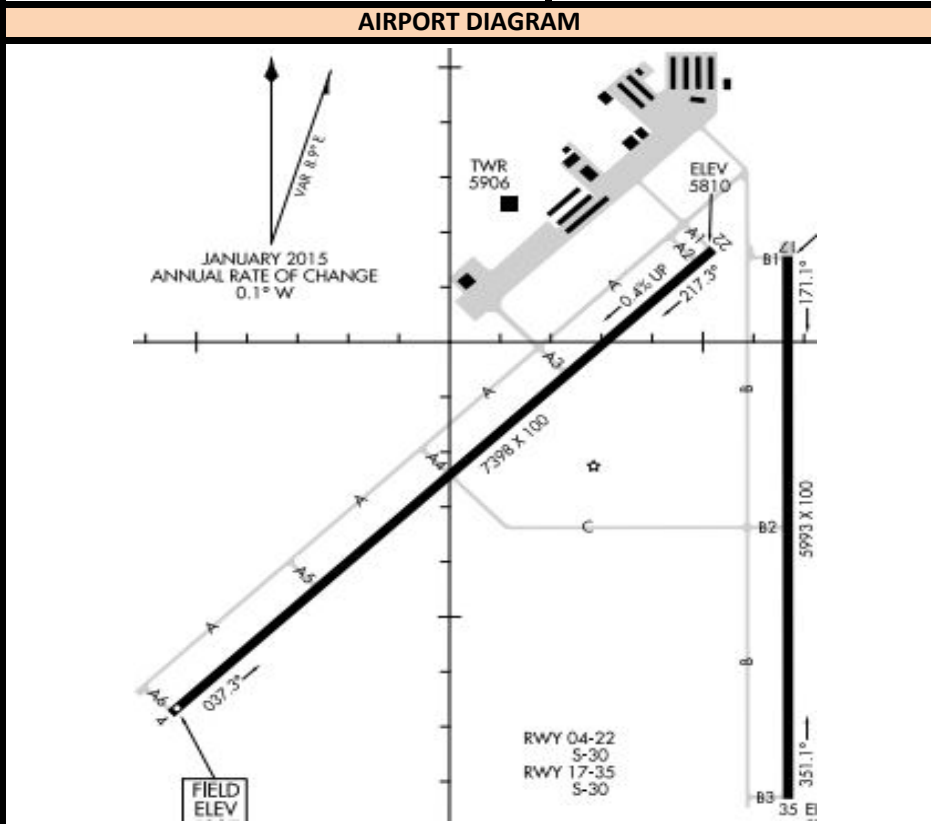
INSTRUMENT APPROACH PROCEDURES					
RWY	APP	FREQ	OBS	I/F/AF	APP ALT
22	ILS	110.10	215	AE	8000
22	GPS		215	EYIPE	8600

STANDARD INSTRUMENT DEPARTURES	



NEARBY NAVAIDS

VORTAC		
ALBUQUERQUE	ABQ	113.20
NDB		
DUDLE	AE	351



IFR RELEASES

- One In One Out Rule: ABQ Approach will either approve or not approve the control towers to use visual separation between IFR operations. Even if visual separation is approved, IFR releases are still mandatory. All releases will have a 3 minute void time. Example release: AEG_TWR: "Request release N123" ABQ_APP: "N123 released" ABQ_APP can amend a Standard Release, i.e. "N123 released maintain 9000"

- How this works:

1. During IFR clearance, give standard altitude to maintain, or Climb via SID, whichever is appropriate for that specific aircraft at your airport.
2. During taxi or when holding short of departure runway, request release.
3. When released by ABQ_APP click the 3:00 Minute timer in VRC. Depart the aircraft ASAP. If you're unable to clear the aircraft for takeoff within this time, request release again from ABQ_APP.

AIRPORT SPECIFIC PROCEDURES

All Runways Standard Release:

- (ALL DEPARTURES) "Fly runway heading, maintain 10/7000"